

Practical information

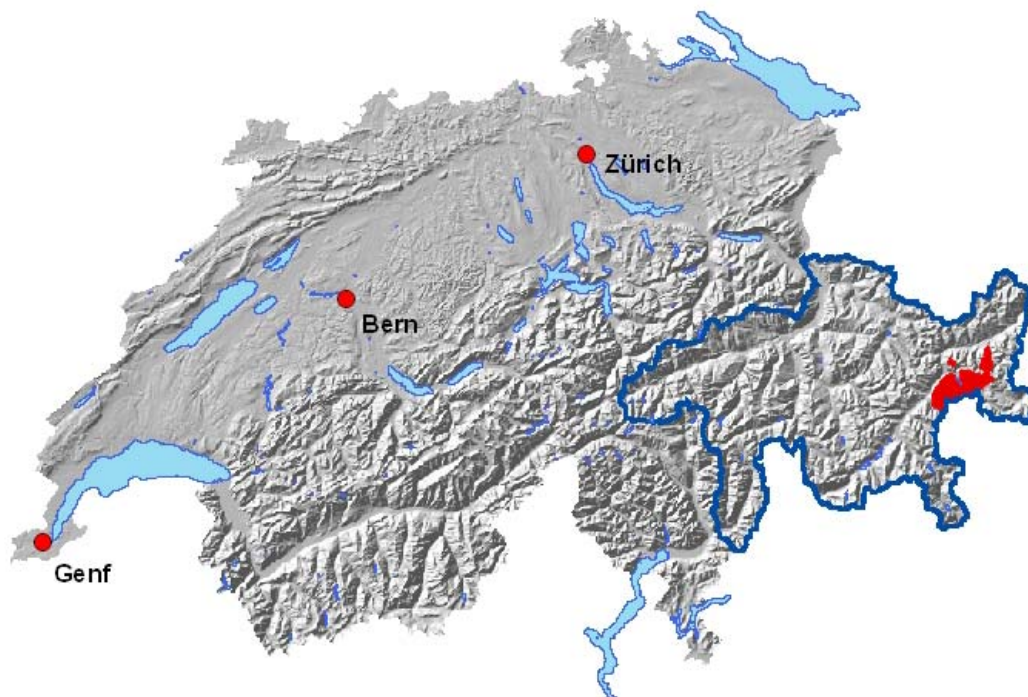
To access the Swiss National Park in Zernez, you can come:

- **by train:** timetable available at www.sbb.ch
- **by car:** notice that if you are coming from Bern/Zürich/Chur, you will certainly have to take the Vereina tunnel, where you have to put the car on the train (about 30 minutes). See the timetable at this link: www.rhb.ch







>> We will inform the registered participants as soon as possible about **car-sharing possibilities**.

Notice that all useful information concerning the booking of your **accommodation** will be sent to you after your official registration.

Situation of the Swiss National Park and access to Zernez:

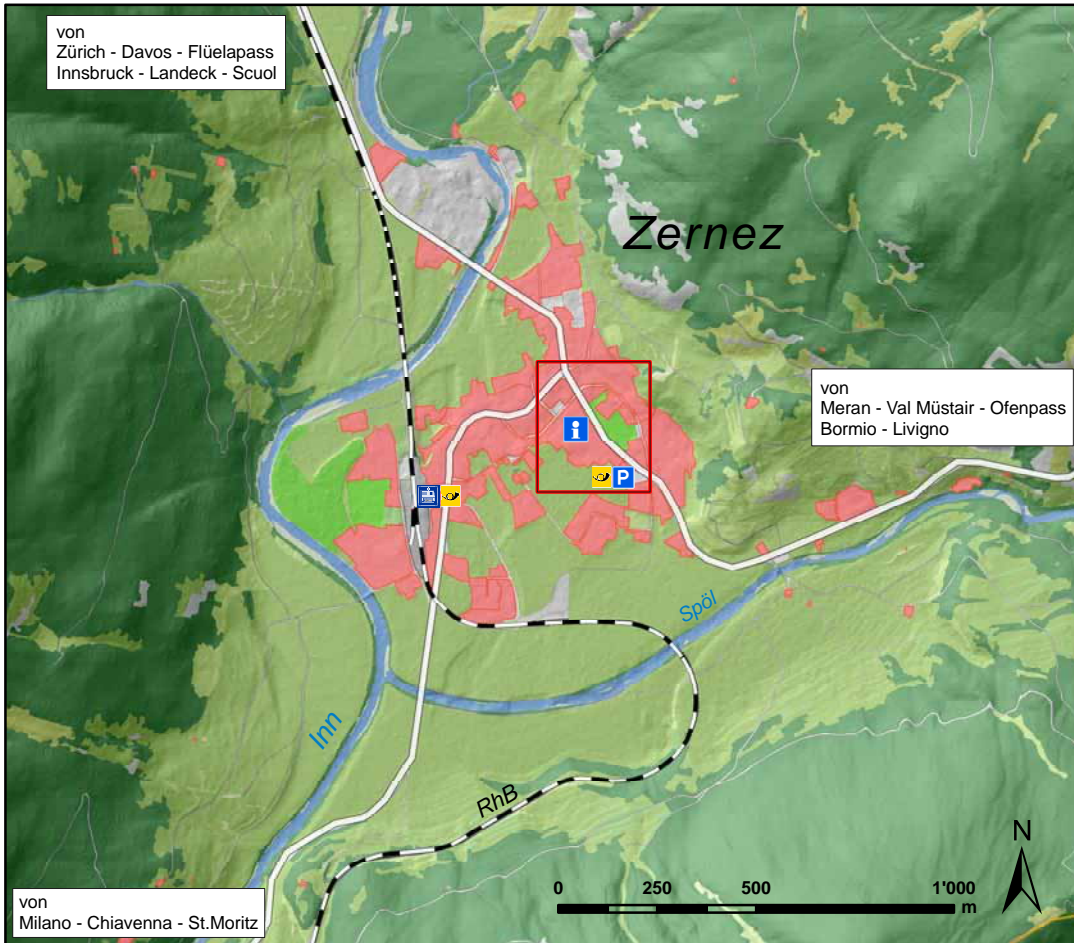


Umgebungskarte des Schweizerischen Nationalparks

-  Bahn
-  Autoverlad
-  Bus
-  Zeltplatz
-  Hütte
-  Hotel



Situationsplan Zernez



Situationsplan Nationalparkzentrum

