



www.parcoroblevault



# Education activities in protected areas **under the impact of the pandemic**

Insights from the Alparc working group on Education  
for Sustainable Development in the Alps





# INTRODUCTION

The global pandemic saw school closures in over 180 countries. Many protected areas had to cancel or downsize their education activities outdoor over several weeks and months. However, Education for Sustainable Development (ESD) is crucial to be maintained as it can help to build resilience, raise awareness, and change behavior to transform our lives towards more sustainable patterns. Even though many activities outside could not be performed as before, several protected areas found new approaches for implementing activities even digitally. In the present survey we wanted to gain an overview on how the protected areas dealt with the challenge and adapted their activities according to national regulations.

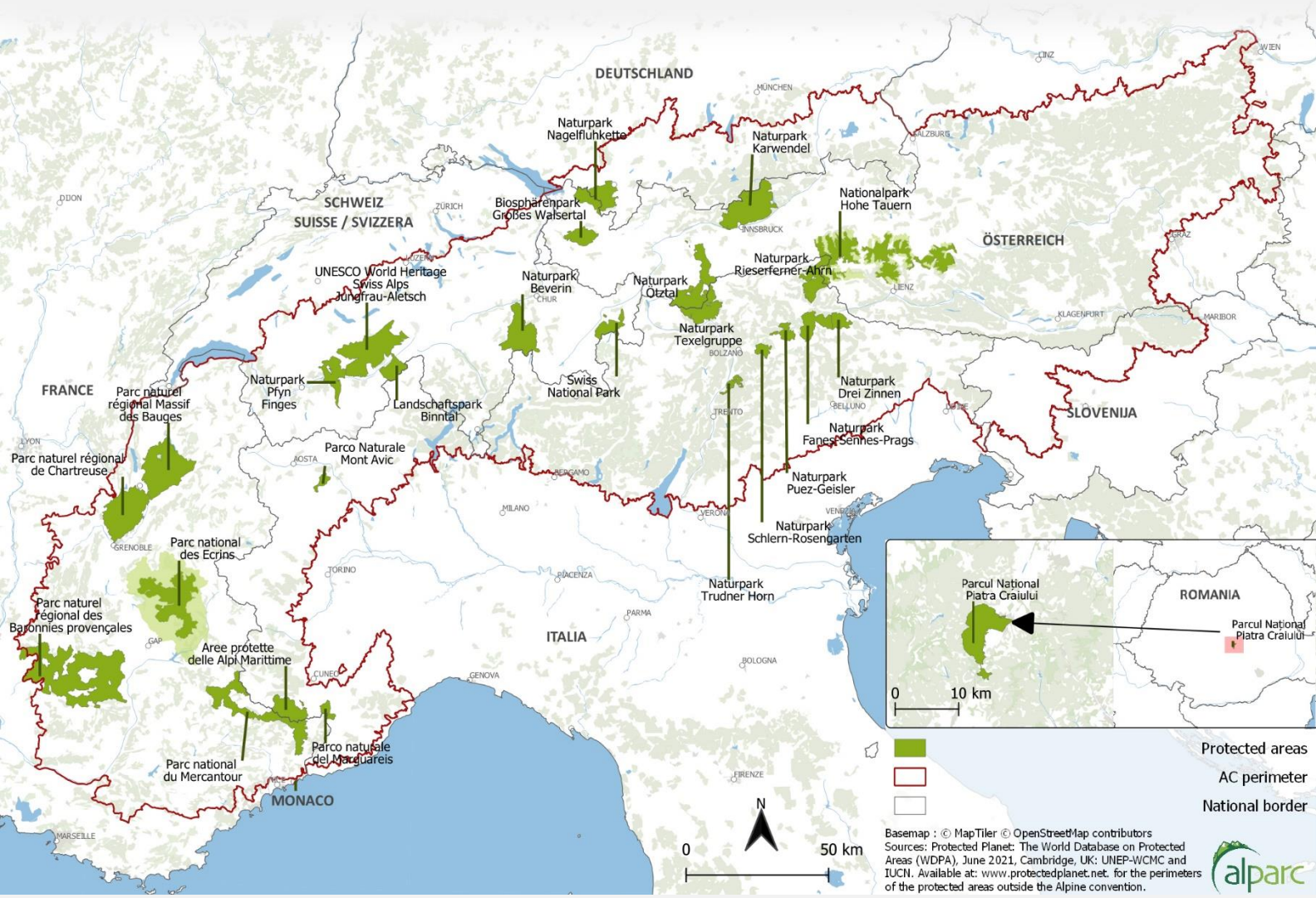
Enjoy reading!

The ALPARC Team



# PARTICIPANTS

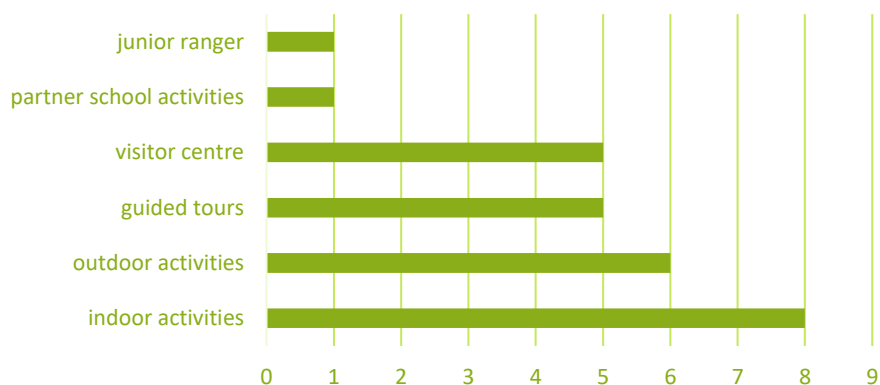
• Biosphärenpark Grosses Walsertal, Austria .....	P.05
• Nationalpark Hohe Tauern Kärnten, Austria .....	P.06
• Nationalpark Hohe Tauern Tirol, Austria .....	P.07
• Naturpark Karwendel, Austria .....	P.08
• Naturpark Ötztal, Austria .....	P.09
• Parc National du Mercantour, France .....	P.10
• Parc Naturel Régional Massif des Bauges, France .....	P.11
• Parc Naturel Régional des Baronnies Provençales, France .....	P.12
• Parc National des Ecrins, France .....	P.13
• Parc Naturel Régional de Chartreuse, France .....	P.14
• Nationalpark Berchtesgaden, Germany .....	P.15
• Naturpark Nagelfluhkette, Germany .....	P.16
• Parco Naturale Montavic, Italy .....	P.17
• Parco Naturale Alpi Marittime, Italy .....	P.18
• Naturparke Südtirol, Italy .....	P.19
• Parco Naturale del Monviso, Italy .....	P.20
• Piatra Craiului National park , Romania .....	P.21
• Naturpark Beverin, Switzerland .....	P.22
• Landschaftspark Binntal, Switzerland .....	P.23
• Naturpark Pfyn Finges, Switzerland .....	P.24
• Schweizerischer Nationalpark, Switzerland .....	P.25
• UNESCO World Heritage Jungfrau Aletsch, Switzerland .....	P.26



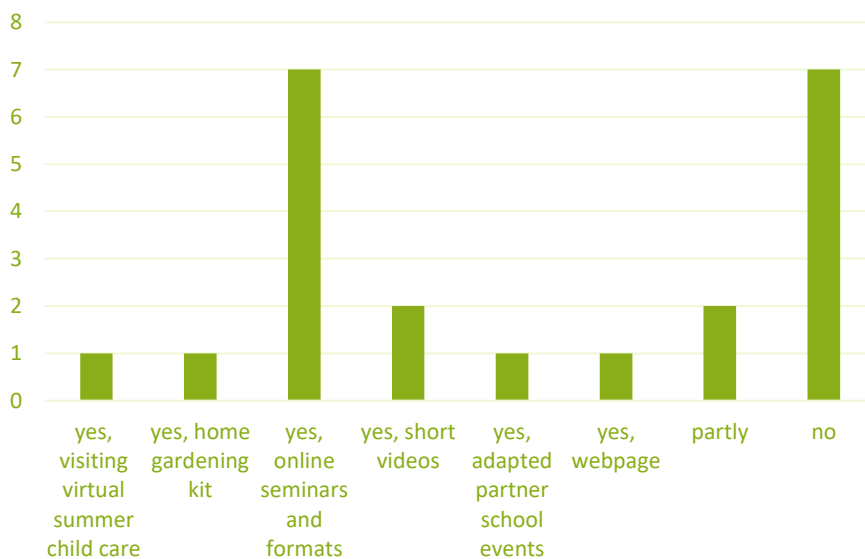


## SOME RESULTS AT A GLANCE

### Which educational programs and activities suffered most from restriction measures?



### Did the crisis encourage you to develop new activities or new formats?





## BIOSPHERE PARK GROSSES WALSER TAL

<b>1.</b> What have been the most important and popular education programmes in your park before the Covid crisis?	School programmes, exhibition in the biosphere house (visitor centre), guided tours in nature, some workshops
<b>2.</b> Which educational programmes and activities suffered the most from restriction measures?	Activities in the visitor centre
<b>3.</b> Did you manage to continue education activities during the crisis? What are the measures taken to succeed? Please refer also to other organisations in case you found joint solutions with other parks or associations.	Partly in case it was possible with suitable covid measures (for example some times during summer 2020 guided tours, groups in the visitor centre or workshops)
<b>4.</b> Did the crisis encourage you to develop new activities or new formats?	We don't know yet
<b>5.</b> What are your plans for the post-Covid situation? How do you plan to proceed in the next year?	Firstly we will try to open again our visitor centre and start again with guided tours, workshops and in autumn also with school programme
<b>6.</b> Useful links regarding your education activities	<a href="http://www.grosseswalsertal.at">www.grosseswalsertal.at</a> (see Sommerprogramm 2021)



**PERSON IN CHARGE  
OF EDUCATION**

**Christine KLENOVEC**



## NATIONALPARK HOHE TAUERN KÄRNTEN

1. What have been the most important and popular education programmes in your park before the Covid crisis?	Naturlehrweg Seebachtal + Ausstellung "univerzoom nationalpark (@Mallnitz); Gletscherweg Pasterze + Ausstellung "der König und sein Thron" (@Heiligenblut)
2. Which educational programmes and activities suffered the most from restriction measures?	School activities indoor
3. Did you manage to continue education activities during the crisis? What are the measures taken to succeed? Please refer also to other organisations in case you found joint solutions with other parks or associations.	A few seminars where held online; a poster-competition was carried out especially for our partner schools
4. Did the crisis encourage you to develop new activities or new formats?	Online Event (Seminar- Biodiversity -Quo vadis) furthermore a couple of things in the education sector - short videos for schools, a different partner school event adapted to Covid-measures
5. What are your plans for the post-Covid situation? How do you plan to proceed in the next year?	Offer outdoor programs to ensure sustainable mind sets for protected areas like national parks
6. Useful links regarding your education activities	<a href="http://www.besucherzentrum-mallnitz.at">www.besucherzentrum-mallnitz.at</a> <a href="http://www.hohetauern.at">www.hohetauern.at</a> ; <a href="http://www.klima.schule">www.klima.schule</a> <a href="http://www.hausdersteinboecke.at">www.hausdersteinboecke.at</a> ....



PERSON IN CHARGE  
OF EDUCATION

Magdalena KARAN



## NATIONALPARK HOHE TAUERN TIROL

<b>1.</b> What have been the most important and popular education programmes in your park before the Covid crisis?	Project days in the national park, water school, climate school and travelling exhibition, partner schools
<b>2.</b> Which educational programmes and activities suffered the most from restriction measures?	School activities indoor
<b>3.</b> Did you manage to continue education activities during the crisis? What are the measures taken to succeed? Please refer also to other organisations in case you found joint solutions with other parks or associations.	Unfortunately, educational activities have not been able to continue during the crisis due to the lockdowns, the school closures and the ban on visiting schools for non-schoolers – there are currently no opportunities either.
<b>4.</b> Did the crisis encourage you to develop new activities or new formats?	Training for contactless driving – visit the summer childcare with our exhibition car – everything at a distance
<b>5.</b> What are your plans for the post-Covid situation? How do you plan to proceed in the next year?	At the moment we are planning our normal program for the summer. This means that the school programs can be carried out again in the second semester. Virtual programmes are not planned at present, as the national park lives from direct visits by the rangers to the schools.
<b>6.</b> Useful links regarding your education activities	<a href="https://hohetauern.at/de/bildung.html">https://hohetauern.at/de/bildung.html</a>



**PERSON IN CHARGE  
OF EDUCATION**

**Ruth BSTIELER**



## NATURPARK KARWENDEL

<b>1.</b> What have been the most important and popular education programmes in your park before the Covid crisis?	Activities with nature park schools, Junior Ranger program
<b>2.</b> Which educational programmes and activities suffered the most from restriction measures?	School excursions, school expeditions, monthly junior ranger program
<b>3.</b> Did you manage to continue education activities during the crisis? What are the measures taken to succeed? Please refer also to other organisations in case you found joint solutions with other parks or associations.	Not well; we provided some materials online
<b>4.</b> Did the crisis encourage you to develop new activities or new formats?	No
<b>5.</b> What are your plans for the post-Covid situation? How do you plan to proceed in the next year?	We hope and try to guide outdoor tours with our nature park schools and Junior Ranger



**PERSON IN CHARGE  
OF EDUCATION**

**Anton HEUFELDER**





## NATURPARK ÖTZTAL

<b>1.</b> What have been the most important and popular education programmes in your park before the Covid crisis?	School program, guided tours with visitors
<b>2.</b> Which educational programmes and activities suffered the most from restriction measures?	School activities indoor
<b>3.</b> Did you manage to continue education activities during the crisis? What are the measures taken to succeed? Please refer also to other organisations in case you found joint solutions with other parks or associations.	No we had to cancel all school activities by legal obligation
<b>4.</b> Did the crisis encourage you to develop new activities or new formats?	It was not possible for schools to organise activities – with nature parc schools contacts continued with teachers and directors
<b>5.</b> What are your plans for the post-Covid situation? How do you plan to proceed in the next year?	We'll continue offering our activities – children need to be tested (3x per week) and also the guides...
<b>7.</b> Further remarks or comments	In my opinion outdoor experience will soon be allowed again – as soon as the legal context will be changed for schools activities will restart – especially as teachers would like to do something with us.



**PERSON IN CHARGE  
OF EDUCATION**

**Thomas SCHMARDA**



## PARC NATIONAL DU MERCANTOUR

1. What have been the most important and popular education programmes in your park before the Covid crisis?	Explor'nature Ecoles, an annual program designed for the pupils of the schools within the Mercantour territory/ Subjects : participative sciences and local biodiversity
2. Which educational programmes and activities suffered the most from restriction measures?	School activities outdoor
3. Did you manage to continue education activities during the crisis? What are the measures taken to succeed? Please refer also to other organisations in case you found joint solutions with other parks or associations.	During the crisis, use of online solutions (such as online conferences and meetings). When possible, indoor activities (interventions within the classes)
4. Did the crisis encourage you to develop new activities or new formats?	Not really
5. What are your plans for the post-Covid situation? How do you plan to proceed in the next year?	Hoping to go back to normal. Mostly bring back the outdoor activities as much as possible, since this is the policy of the Park



**PERSON IN CHARGE  
OF EDUCATION**

**Elena MASELLI**



## PARC NATUREL REGIONAL MASSIF DES BAUGES

<p><b>1.</b> What have been the most important and popular education programmes in your park before the Covid crisis?</p>	<p>We have four education programs for schools. The most popular one was : one school -one site :  <a href="http://www.parcdesbauges.com/fr/agir/que-fait-le-parc/assurer-la-mise-en-valeur-des-actions/education-au-territoire.html">http://www.parcdesbauges.com/fr/agir/que-fait-le-parc/assurer-la-mise-en-valeur-des-actions/education-au-territoire.html</a></p>
<p><b>2.</b> Which educational programmes and activities suffered the most from restriction measures?</p>	<p>Activities in the visitor centre</p>
<p><b>3.</b> Did you manage to continue education activities during the crisis? What are the measures taken to succeed? Please refer also to other organisations in case you found joint solutions with other parks or associations.</p>	<p>Postponement of the activities</p>
<p><b>4.</b> Did the crisis encourage you to develop new activities or new formats?</p>	<p>No there is the wish of conserving the activities in person and outside</p>
<p><b>5.</b> What are your plans for the post-Covid situation? How do you plan to proceed in the next year?</p>	<p>No change</p>
<p><b>6.</b> Useful links regarding your education activities</p>	<p><a href="http://www.parcdesbauges.com/fr/agir/que-fait-le-parc/assurer-la-mise-en-valeur-des-actions/education-au-territoire.html">http://www.parcdesbauges.com/fr/agir/que-fait-le-parc/assurer-la-mise-en-valeur-des-actions/education-au-territoire.html</a></p>



**PERSON IN CHARGE  
OF EDUCATION**

**Julie HIGEL**



## PARC NATUREL REGIONAL DES BARONNIES PROVENÇALES

<b>1.</b> What have been the most important and popular education programmes in your park before the Covid crisis?	Understanding the complexity.
<b>2.</b> Which educational programmes and activities suffered the most from restriction measures?	School activities indoor
<b>3.</b> Did you manage to continue education activities during the crisis? What are the measures taken to succeed? Please refer also to other organisations in case you found joint solutions with other parks or associations.	Yes : activities discovery of the territory, programme « the school of the outdoor”
<b>4.</b> Did the crisis encourage you to develop new activities or new formats?	Yes but very occasionally : distance work (reportages photo-patrimony – manual workshops, astronomy
<b>5.</b> What are your plans for the post-Covid situation? How do you plan to proceed in the next year?	No plan. Continue to do what we used to do: encourage people to go out, to get some fresh air, to practice an outdoor sport, to observe the nature of which we are only a part...
<b>6.</b> Useful links regarding your education activities	<a href="https://www.baronnies-provencales.fr/nos-actions/education-au-territoire/">https://www.baronnies-provencales.fr/nos-actions/education-au-territoire/</a>



PERSON IN CHARGE  
OF EDUCATION

Matthieu MORARD





## PARC NATIONAL DES ECRINS

<b>1.</b> What have been the most important and popular education programmes in your park before the Covid crisis?	The programmes for the large public
<b>2.</b> Which educational programmes and activities suffered the most from restriction measures?	Activities in the visitor centre
<b>3.</b> Did you manage to continue education activities during the crisis? What are the measures taken to succeed? Please refer also to other organisations in case you found joint solutions with other parks or associations.	School and public events have been completely stopped when health measures made it necessary (confinements 2020) - outside confinements: reduction in the number of participants, and by registration only (public events)
<b>5.</b> What are your plans for the post-Covid situation? How do you plan to proceed in the next year?	I don't know, we'll adapt accordingly
<b>6.</b> Useful links regarding your education activities	<a href="https://www.ecrins-parcnational.fr/programme-animation">https://www.ecrins-parcnational.fr/programme-animation</a> - <a href="https://www.ecrins-parcnational.fr/un-garde-une-classe">https://www.ecrins-parcnational.fr/un-garde-une-classe</a>



**PERSON IN CHARGE  
OF EDUCATION**

**Claire CALVET**



## PARC NATUREL REGIONAL DE CHARTREUSE

<b>1.</b> What have been the most important and popular education programmes in your park before the Covid crisis?	All educational programmes linked to the territory, sustainable development and eco-citizenship for schools and groups outside school hours
<b>2.</b> Which educational programmes and activities suffered the most from restriction measures?	School activities indoor
<b>3.</b> Did you manage to continue education activities during the crisis? What are the measures taken to succeed? Please refer also to other organisations in case you found joint solutions with other parks or associations.	During the spring 2020 lockdown, all educational projects were stopped. They have all been postponed to the 2020/21 school year.
<b>4.</b> Did the crisis encourage you to develop new activities or new formats?	No, no new projects, our projects promote outdoor field trips
<b>5.</b> What are your plans for the post-Covid situation? How do you plan to proceed in the next year?	Still projects with outdoor field trips to get young people out of school or out of school
<b>6.</b> Useful links regarding your education activities	<a href="https://www.parc-chartreuse.net/agir/sensibilisation-education/projets-pedagogiques-scolaires-et-hors-temps-scolaire/">https://www.parc-chartreuse.net/agir/sensibilisation-education/projets-pedagogiques-scolaires-et-hors-temps-scolaire/</a>



**PERSON IN CHARGE  
OF EDUCATION**

**Sylvène ALLEVARD**



## NATIONALPARK BERCHTESGADEN

<p><b>1.</b> What have been the most important and popular education programmes in your park before the Covid crisis?</p>	<ul style="list-style-type: none"> <li>- Educational program for registered groups</li> <li>- Hiking program for individual visitors</li> <li>- Weekly lessons for our local children's groups</li> <li>- Visitor centre "Haus der Berge" and all other info points in the area of the national park</li> </ul>
<p><b>2.</b> Which educational programmes and activities suffered the most from restriction measures?</p>	<ul style="list-style-type: none"> <li>- School activities indoor (also for kindergarten groups)</li> <li>- Guided tours with already settled groups (schools and kindergarten)</li> <li>- Activities in the visitor centre</li> <li>- All programs with children and youth</li> </ul>
<p><b>3.</b> Did you manage to continue education activities during the crisis? What are the measures taken to succeed? Please refer also to other organisations in case you found joint solutions with other parks or associations.</p>	<p>During lockdown any kind of informal education was completely forbidden for a while.</p> <p>After the infection numbers declined in the summer months, the situation was a little bit more relaxed and some kind of informal education was possible - but still under strict guidelines.</p>
<p><b>4.</b> Did the crisis encourage you to develop new activities or new formats?</p>	<p>1. Mobile educational offers in the national park: The visitors of the national park have the possibility to inform themselves, learn and find out more about specific topics of the protected area (e.g. geology, diversity of insects in the national park, alpine farming in the national park, bark beetle,...) during their visit/hike. These mobile educational offers can be found at some of the visitor hotspots in the national park. The staff of the national park pass on the information to the visitors and is available for questions from them.</p> <p>2. Info2go: Under the motto "useful information for the go" the visitors of the protected area can inform themselves about current topics from the protected area via QR codes. During their visit they can find the "Info2go" at 11 stations distributed in the national park.</p>
<p><b>5.</b> What are your plans for the post-Covid situation? How do you plan to proceed in the next year?</p>	<p>During the pandemic we took the chance and trained ourselves in the digital direction. Nevertheless we look forward to jointly analogue nature experiences again. In the future, the focus will be on experiencing nature outdoors with all our senses and use digital media to a reasonable extent.</p>
<p><b>6.</b> Useful links regarding your education activities</p>	<p>More information can be found on the website of Berchtesgaden national park</p>



**PERSON IN CHARGE  
OF EDUCATION**

**Andrea HEISS**



## NATURPARK NAGELFLUHKETTE

<p><b>1.</b> What have been the most important and popular education programmes in your park before the Covid crisis?</p>	<p>Naturparkschule = Draußen-Unterricht in den Jahrgangsstufen 1-4</p>
<p><b>2.</b> Which educational programmes and activities suffered the most from restriction measures?</p>	<p>School activities indoor</p>
<p><b>3.</b> Did you manage to continue education activities during the crisis? What are the measures taken to succeed? Please refer also to other organisations in case you found joint solutions with other parks or associations.</p>	<p>Digital nature park school with short self made videos</p>
<p><b>4.</b> Did the crisis encourage you to develop new activities or new formats?</p>	<p>We started to do more online, digital (even our workshops for teachers are online now)</p>
<p><b>5.</b> What are your plans for the post-Covid situation? How do you plan to proceed in the next year?</p>	<p>We will continue with Nature park School, but also digital nature park school</p>
<p><b>6.</b> Useful links regarding your education activities</p>	<p><a href="https://nagelfluhkette.info/bildung/naturparkschulen#digitale-naturparkschule">https://nagelfluhkette.info/bildung/naturparkschulen#digitale-naturparkschule</a></p>



**PERSON IN CHARGE  
OF EDUCATION**

**Anja WORSCHKECH**





## PARCO NATURALE MONT AVIC

<b>1.</b> What have been the most important and popular education programmes in your park before the Covid crisis?	Educational projects with schools
<b>3.</b> Did you manage to continue education activities during the crisis? What are the measures taken to succeed? Please refer also to other organisations in case you found joint solutions with other parks or associations.	Only outdoor summer activities (workshops and excursions) were possible.
<b>4.</b> Did the crisis encourage you to develop new activities or new formats?	Precautionary measures: use of a mask in case of proximity, hand hygiene and filling in a self-certification form We have modified some activities in order to guarantee a certain distance and we have reduced the number of participants
<b>5.</b> What are your plans for the post-Covid situation? How do you plan to proceed in the next year?	For next year we will modify activities and proposals according to the epidemiological situation
<b>6.</b> Useful links regarding your education activities	<a href="https://www.montavic.it/index.php/Visita-il-Parco/Didattica">https://www.montavic.it/index.php/Visita-il-Parco/Didattica</a> <a href="https://www.facebook.com/parcomontavic">https://www.facebook.com/parcomontavic</a>
<b>7.</b> Further remarks or comments	The outdoor activities were possible in compliance with certain protocols, the most penalised activities were the projects with schools because it is not possible for external personnel to access the school premises.



PERSON IN CHARGE  
OF EDUCATION

BOSIO G. and FOGHINO F



## PARCO NATURALE ALPI MARITTIME

1. What have been the most important and popular education programmes in your park before the Covid crisis?	Visits to the Men and Wolves Centre
2. Which educational programmes and activities suffered the most from restriction measures?	A little bit of all the fields of choice you mentioned
3. Did you manage to continue education activities during the crisis? What are the measures taken to succeed? Please refer also to other organisations in case you found joint solutions with other parks or associations.	During the period of Covid-19 restrictions we did FAD, designed new educational activities, followed training
4. Did the crisis encourage you to develop new activities or new formats?	Yes, we designed new educational programmes regarding distance learning
5. What are your plans for the post-Covid situation? How do you plan to proceed in the next year?	Impossible to give an answer, it will depend on the course of the pandemic; we hope to start a new cultural-social-economic-political path
6. Useful links regarding your education activities	<a href="https://www.areeprotettealpimarittime.it/educazione-ambientale/risorse-per-la-didattica-a-distanza">https://www.areeprotettealpimarittime.it/educazione-ambientale/risorse-per-la-didattica-a-distanza</a>



PERSON IN CHARGE  
OF EDUCATION

Alessandro BARABINO



## NATURPARKE SÜDTIROL

<b>1.</b> What have been the most important and popular education programmes in your park before the Covid crisis?	Several kinds of Education Programs into the seven visitor centres; actions for kids and young people outside the visitor centres; guided tours in the seven Natura parks;
<b>2.</b> Which educational programmes and activities suffered the most from restriction measures?	Activities in the visitor centre
<b>3.</b> Did you manage to continue education activities during the crisis? What are the measures taken to succeed? Please refer also to other organisations in case you found joint solutions with other parks or associations.	We offered some webinar (Craft workshop; Story telling ) for kids;
<b>4.</b> Did the crisis encourage you to develop new activities or new formats?	Yes, we have communicated more via the social networks; Through the possibility of online meetings our team was strengthened
<b>5.</b> What are your plans for the post-Covid situation? How do you plan to proceed in the next year?	The Covid situation allows us to restart our work in the visitor centres, as well as the outdoor program. Covid rules will be followed. Internal communication via online meetings will continue.
<b>6.</b> Useful links regarding your education activities	<a href="https://naturparks.provinz.bz.it/">https://naturparks.provinz.bz.it/</a>



**PERSON IN CHARGE  
OF EDUCATION**

**Maria Margareth PALLHUBER**



## PARCO NATURALE DEL MONVISO

<b>1.</b> What have been the most important and popular education programmes in your park before the Covid crisis?	Excursions in the park to know the protected area
<b>2.</b> Which educational programmes and activities suffered the most from restriction measures?	School activities outdoor and indoor
<b>3.</b> Did you manage to continue education activities during the crisis? What are the measures taken to succeed? Please refer also to other organisations in case you found joint solutions with other parks or associations.	We turned the education activities in webinar and schools appreciate this modality
<b>4.</b> Did the crisis encourage you to develop new activities or new formats?	Yes, we tried new formats to ensure the education activities
<b>5.</b> What are your plans for the post-Covid situation? How do you plan to proceed in the next year?	We hope to be able to resume activities in presence



**PERSON IN CHARGE  
OF EDUCATION**

**Maria Angela ALOI**





## PIATRA CRAIULUI NATIONAL PARK

<b>1.</b> What have been the most important and popular education programmes in your park before the Covid crisis?	Educational programmes in the Piatra Craiului National Park Visitor Centre and on diverse environmental occasions and not only school educational programmes.
<b>2.</b> Which educational programmes and activities suffered the most from restriction measures?	School activities indoor
<b>3.</b> Did you manage to continue education activities during the crisis? What are the measures taken to succeed? Please refer also to other organisations in case you found joint solutions with other parks or associations.	Following the restrictive measures we continued to have educational programmes in the Visitor Centre for small groups of children and we organized YAT 2020.
<b>4.</b> Did the crisis encourage you to develop new activities or new formats?	Up until now we haven't prepared new activities.
<b>5.</b> What are your plans for the post-Covid situation? How do you plan to proceed in the next year?	If the situation doesn't get any better we plan to prepare educational programmes using online technology.



**PERSON IN CHARGE  
OF EDUCATION**

**Andrea KURTA**



## NATURPARK BEVERIN

<p><b>1.</b> What have been the most important and popular education programmes in your park before the Covid crisis?</p>	<p>School trips with environmental education, leisure offer for kids (similar to scouts, but combined with BNE / Environmental education), excursions and presentations for adults</p>
<p><b>2.</b> Which educational programmes and activities suffered the most from restriction measures?</p>	<p>Guided tours with different publics</p>
<p><b>3.</b> Did you manage to continue education activities during the crisis? What are the measures taken to succeed? Please refer also to other organisations in case you found joint solutions with other parks or associations.</p>	<p>For the kids some tips for experiments at home during lockdown. not sure, if many used them though. From June to October we could offer most events normally, with less people, distance etc.</p>
<p><b>4.</b> Did the crisis encourage you to develop new activities or new formats?</p>	<p>Currently developing a digital course instead of live version</p>
<p><b>5.</b> What are your plans for the post-Covid situation? How do you plan to proceed in the next year?</p>	<p>Plan events and activities as usual, but if possible avoid small rooms or big groups of people.</p>



**PERSON IN CHARGE  
OF EDUCATION**

**Samirah HOHL**



## LANDSCHAFTSTAL BINNTAL

<p><b>1.</b> What have been the most important and popular education programmes in your park before the Covid crisis?</p>	<p>Guided Tours (different publics), Parkfuchse (free time activity for kids in the park)</p>
<p><b>2.</b> Which educational programmes and activities suffered the most from restriction measures?</p>	<p>guided tours with different publics</p>
<p><b>3.</b> Did you manage to continue education activities during the crisis? What are the measures taken to succeed? Please refer also to other organisations in case you found joint solutions with other parks or associations.</p>	<p>During the lockdown in Switzerland, all activities had to be cancelled. In summer, most offers could take place normally (because they took place outside) and in September we had several school classes in the park. Sometimes we had to reduce the number of participants.</p>
<p><b>4.</b> Did the crisis encourage you to develop new activities or new formats?</p>	<p>We made a webpage for the kids, where we added ideas for activities and games outside, as compensation for the kids program, that had to be cancelled, and to give ideas to the parents who had to look for their kids, when the schools were closed. <a href="https://www.landschaftspark-binntal.ch/de/bildungsgruppen/kinderangebote/ideen-tipps.php">https://www.landschaftspark-binntal.ch/de/bildungsgruppen/kinderangebote/ideen-tipps.php</a> We promoted the webpage on Facebook and Instagram...</p>
<p><b>5.</b> What are your plans for the post-Covid situation? How do you plan to proceed in the next year?</p>	<p>We plan to continue as we did before the crisis. We hope, that the situations allows to do so... We plan, as we did before and adapt continuously to the instructions...</p>
<p><b>6.</b> Useful links regarding your education activities</p>	<p><a href="https://www.landschaftspark-binntal.ch/de/bildungsgruppen/kinderangebote/freizeitangebot-parkfuechse.php">https://www.landschaftspark-binntal.ch/de/bildungsgruppen/kinderangebote/freizeitangebot-parkfuechse.php</a> - <a href="https://www.landschaftspark-binntal.ch/de/entdecken-erleben/veranstaltungen/veranstaltungskalender.php">https://www.landschaftspark-binntal.ch/de/entdecken-erleben/veranstaltungen/veranstaltungskalender.php</a></p>



**PERSON IN CHARGE  
OF EDUCATION**

**Julia AGTEN**



## NATURPARK PFYN FINGES

1. What have been the most important and popular education programmes in your park before the Covid crisis?	School programmes and Gardening courses
2. Which educational programmes and activities suffered the most from restriction measures?	Guided tours with different publics
3. Did you manage to continue education activities during the crisis? What are the measures taken to succeed? Please refer also to other organisations in case you found joint solutions with other parks or associations.	Home gardening Kit, and activity in our school gardens
4. Did the crisis encourage you to develop new activities or new formats?	Home gardening-Kit, over 5000 kits sent directly to the teachers, digital program on our website
5. What are your plans for the post-Covid situation? How do you plan to proceed in the next year?	The school will be open. Events have to have a plan B
6. Useful links regarding your education activities	<a href="https://www.pfyn-finges.ch/de/bildung/partnerschulen/gartenkit">https://www.pfyn-finges.ch/de/bildung/partnerschulen/gartenkit</a>
7. Further remarks or comments	I don't think, that digital EE is an answer to Corona. Parks should develop offers like "Why do we wear a mask"!



PERSON IN CHARGE  
OF EDUCATION

Armin CHRISTEN



## SCHWEIZERISCHER NATIONALPARK

<p><b>1.</b> What have been the most important and popular education programmes in your park before the Covid crisis?</p>	<p>The same as during Covid-19: Excursions (guided tours) through the park.</p>
<p><b>2.</b> Which educational programmes and activities suffered the most from restriction measures?</p>	<p>Activities in the visitor center</p>
<p><b>3.</b> Did you manage to continue education activities during the crisis? What are the measures taken to succeed? Please refer also to other organisations in case you found joint solutions with other parks or associations.</p>	<p>- Yes, fortunately we could conduct all our outdoor-activities almost identically as before. This, because we only have activities during summer and autumn and in that time, restrictions were not that strong in Switzerland. We did small adaptation measures, but they did not affect the activities strongly.</p> <p>- Measures taken for excursions: Covid-19 concept, hygiene measures: do not put any objects in the round, disinfect telescope, groups of max. 20 P., keep distances.</p> <p>- Visitor Centre (main effect, but not really on education activities: lot of Guests, restriction in number of people that could enter the Centre): Information stand at the forecourt of the Centre.</p> <p>- Indoor Education activities: Only with school classes - were still possible in the time we did these activities.</p>
<p><b>4.</b> Did the crisis encourage you to develop new activities or new formats?</p>	<p>Just a bit, but not when talking about educational activities, as the restrictions were not so severe in Switzerland in summer &amp; autumn: To cope with the high number of new visitors: Work with volunteers, that inform people at the resting places in the park (supporting park rangers), but not with information stands or similar, just by standing there with telescope and binoculars.</p>
<p><b>5.</b> What are your plans for the post-Covid situation? How do you plan to proceed in the next year?</p>	<p>We plan to proceed as we did this year. We hope that we will again be able to carry out all our activities</p>
<p><b>6.</b> Useful links regarding your education activities</p>	<p><a href="https://www.nationalpark.ch/en/visit/guided-walks/">https://www.nationalpark.ch/en/visit/guided-walks/</a>  <a href="https://www.nationalpark.ch/en/visit/schools/">https://www.nationalpark.ch/en/visit/schools/</a>  <a href="https://www.nationalpark.ch/en/visit/educational-trails/">https://www.nationalpark.ch/en/visit/educational-trails/</a></p>



PERSON IN CHARGE  
OF EDUCATION

Andrea MILLHÄUSLER





## UNESCO WORLD HERITAGE SWISS ALPS JUNGFRAU-ALETSCHE

<b>1.</b> What have been the most important and popular education programmes in your park before the Covid crisis?	Education for Sustainable Development (ESD) special programmes for free (exhibition World Nature Forum and excursion)
<b>2.</b> Which educational programmes and activities suffered the most from restriction measures?	All activities with groups (be it indoor or outdoor)
<b>3.</b> Did you manage to continue education activities during the crisis? What are the measures taken to succeed? Please refer also to other organisations in case you found joint solutions with other parks or associations.	No, there was a complete break from march to July, but a lot of time to invest in creating and improving programmes (s. q. 5 below)
<b>4.</b> Did the crisis encourage you to develop new activities or new formats?	We are currently developing ways on which we can transport our heritage into the class rooms. Be it as a replacement if visiting the site is not possible or be it as a complement for the visit done. Different online platforms are already existing and discussed to be developed, e.g. external ( <a href="https://www.brennpunkt-landschaft.ch/">https://www.brennpunkt-landschaft.ch/</a> ) or internal ( <a href="https://www.jungfraualetsch.ch/de/dokumente/">https://www.jungfraualetsch.ch/de/dokumente/</a> )
<b>5.</b> What are your plans for the post-Covid situation? How do you plan to proceed in the next year?	Expand activities on the Bernese side of the world heritage (only Valais so far), being able to offer online tools to transport World Heritage in classrooms (s. q. 4) and having a climate change program for our youngest students (Aletschfloh: <a href="https://wnf.ch/du-bist-nicht-allein-kleiner-aletschfloh/">https://wnf.ch/du-bist-nicht-allein-kleiner-aletschfloh/</a> ) as a parcourse in the exhibition
<b>6.</b> Useful links regarding your education activities	See above. Central platform: <a href="https://www.jungfraualetsch.ch/en/learning/">https://www.jungfraualetsch.ch/en/learning/</a>



**PERSON IN CHARGE  
OF EDUCATION**

**Cédric LEHMANN**